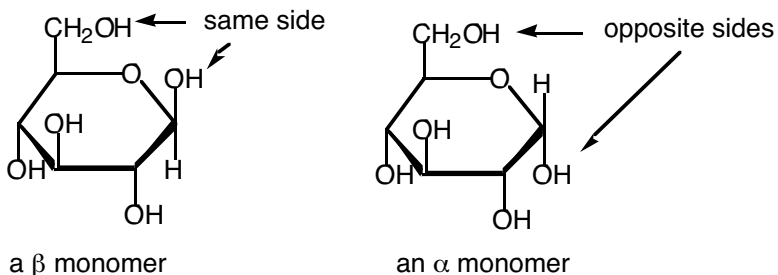
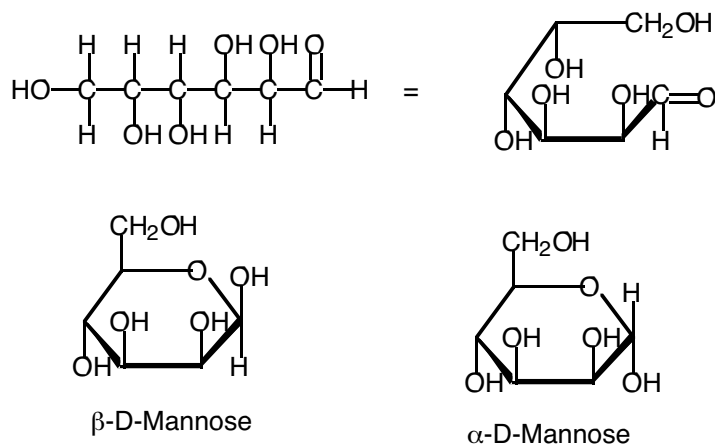


Selected homework answers for Chapter 22

22.44 – In the β form of a carbohydrate hemiacetal, the $-\text{OH}$ group attached to C1 (the hemiacetal carbon) is on the same side of the ring as the $-\text{CH}_2\text{OH}$ (carbon 6). In the α form, the OH group at C1 and the $-\text{CH}_2\text{OH}$ are on opposite sides of the ring.



22.46



22.60 – Lactose and maltose have hemiacetal linkages that give positive Tollens' test results. Sucrose has no hemiacetal group and is thus unreactive toward Tollens' reagent.